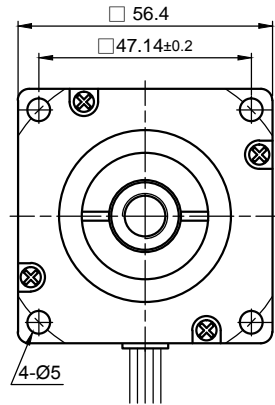
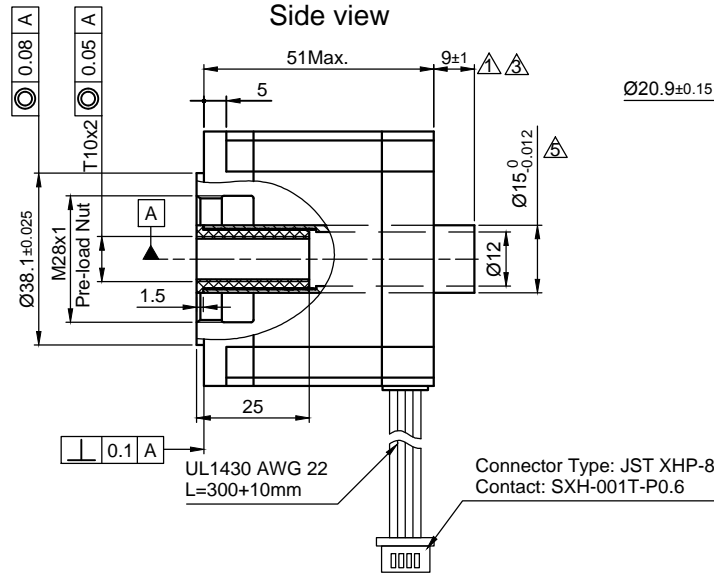


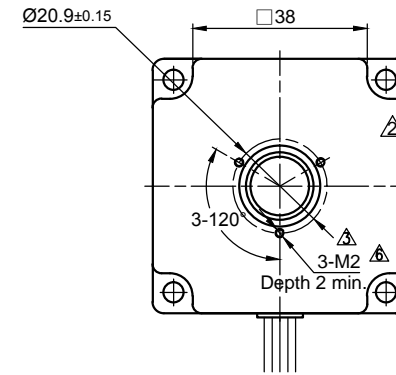
Front view and mounting



Side view



Rear view



SPECIFICATION	UNIPOLAR OR BIPOLAR-1 WINDING	BIPOLAR	
		SERIES	PARALLEL
AMPS/PHASE	2.0	1.41	2.82
RESISTANCE/PHASE (Ohms)@25°C	1.5±10%	3.0±10%	0.75±10%
INDUCTANCE/PHASE (mH) @1KHz	2.6±20%	10.4±20%	2.6±20%
SPINDLE PITCH (mm) [in]	2 [0.078]		
THRUST (N) [lbf]	800 [180]	⚠ ⚠	
RESOLUTION (mm/STEP)	0.01		
STATIC THRUST (N) (NO CURRENT)	> 800	⚠ ⚠	
MAX. SPEED (mm/sec.) at 48V	70	⚠	
MAX. SPEED WITH MAX. THRUST (mm/sec.)	20	⚠	
WEIGHT (Kg) [lb]	0.65 [1.43]		
TEMPERATURE RISE: MAX.80°C (MOTOR STANDSTILL; FOR 2 PHASE ENERGIZED)			
AMBIENT TEMPERATURE -10°C ~ 50°C [14°F ~ 122°F]			
INSULATION RESISTANCE 100 MOhm (UNDER NORMAL TEMPERATURE AND HUMIDITY)			
INSULATION CLASS B 130° [266°F]			
DIELECTRIC STRENGTH 500VAC FOR 1 MIN. (BETWEEN THE MOTOR COILS AND THE MOTOR CASE)			
AMBIENT HUMIDITY MAX. 85% (NO CONDENSATION)			

Please regard the application note at [www.nanotec.com](http://www.nanotec.com) for further informations.

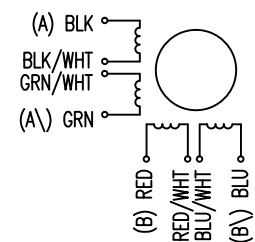
Shaft play is adjustable at the motor.

UNIPOLAR	TYPE OF CONNECTION (EXTERN)			MOTOR		
	1WINDING	BIPOLAR SERIAL	PARALLEL	CONNECTOR PIN NO.	LEADS	WINDING
A —	A —	A —	A —	1	BLK	A
COM —	A —	COM —	COM —	3	BLK/WHT	A
A \	B —	A \	A \	2	GRN/WHT	A \
B —	B —	B —	B —	4	GRN	B
B \	B —	B \	B \	5	RED	B
COM —	B —	COM —	COM —	7	RED/WHT	B
A \	B —	A \	A \	6	BLU/WHT	B \
B \	B —	B \	B \	8	BLU	B \

FULL STEP 2 PHASE-Ex., WHEN FACING MOUNTING END (X)

STEP	A	B	A \	B \	CCW	CW
1	+	+	-	-	↓	↑
2	-	+	+	-	↓	↑
3	-	-	+	+	↓	↑
4	+	-	-	+	↓	↑

WIRING DIAGRAM



06	3-M2 DEPTH	14.08.15	GYQ
05	ADD TOLERANCE OF B-SHAFT	28.04.15	GYQ
04	UPDT. DATA	13.11.14	GYQ
REV	DESCRIPTION	DATE	APVD



L5918S2008-T10x2 ⚠

SCALE	FREE
X	±0.5
1PL	±0.2
2PL	±0.1
ANGLE	±30'

APVD	G.S.	13.11.14
CHKD	ZYL	24.05.10
DRN	GYQ	24.05.10
SIGNATURE	DATE	

LINEAR AKTUATOR

DWG.NO

L5918S2008-T10x2